



TMS E-News

10/30/2020

Face masks are required at all times, school and bus!

**Please continue to follow the COVID guidelines for anyone exhibiting symptoms.
If a student is sick, please keep them home from school.
If you have questions, you can contact our nurse, Terri Horvath, extension 3314.
*Please read the attached flyer for detailed information!***

***** For the safety of our students, and efficiency for morning drop-off, please read the information sheet below!!!**

**School fees for the 2020/2021 school year are being updated in the system.
Please refrain from making payments until all fees have been updated.
We will notify you when this has been completed.**

SCHOOL PICTURE DAY - WEDNESDAY, NOVEMBER 4

- Only Remote students will be invited to get their school photos taken at this time (not mandatory)
- Students A-K will be 11:00am-12:00pm, Students L-Z will be 12:00pm-1:00pm
- This form must be completed within a few hours of picture day:
<https://forms.gle/JNBqfnwkDHjmTZWu9>
- Students will be met at the door by a staff member and escorted into the gym, the bleachers are marked to allow 6ft of distancing while students wait to have their photo taken. Students must wear a mask the entire time they are in the building and can remove only as they are in position for their photo to be taken
- Students will be dismissed from the gym to the parking lot
- **The adult driving students should wait in the parking lot, they cannot enter the building and the process will be very fast!
- Forms will be available that day for a student to pick up and have a parent complete in the car (Forms are also available here: <https://bit.ly/2TjygZ8>)

See Flyers Below:

Covid-19 Information Sheet

TMS Morning Drop-Off Procedures

Lifetouch Information and order form (hard copies available on picture day)

Food Pick-Up



PUSH has funding for furnace and water heater repairs or replacements. Grants are available to low-income, homeowners in the Talawanda School District for critical and emergency home repairs. Call Jeanne or Sabrina at 513-523-8100 for more information

COVID-19 TRAVEL ADVISORY & SELF QUARANTINING

We understand that families may be traveling during the holiday season. The Ohio Health Department & the Butler County Health Department recommend that people self quarantine for 14 days upon returning from a state that is listed as a hotspot for Covid-19. A hotspot is a state that is reporting positive Covid-19 rates of 15% or higher. Please see the link to the map, as the states listed can change.

Travel Advisory States from ODH



TALAWANDA MIDDLE SCHOOL

4030 Oxford-Reilly Road, Oxford, Ohio 45056 | (513) 273-3300 | (513) 273-3303 fax

Empowering Every Learner Every Day!

Returning to School during COVID-19 (Coronavirus) Pandemic

The symptoms of the novel Coronavirus (COVID-19) are like many other childhood illnesses/conditions. In order to provide the safest learning environment in our buildings, the Nurses at Talawanda will be very cautious when deciding if a student needs to leave school. We appreciate your support when these decisions are made.

Students with a new onset of **Cough, Shortness of Breath or NEW loss of taste and/or smell** are suspected to have COVID-19. They will need to be picked up from school immediately and follow the steps below.

If your student has **two (2)** or more of the following symptoms they will also need to be picked up from school immediately and follow the steps below.

- Chills/fever
- Congestion (nasal or sinus)/Runny nose
- Fatigue
- Headache
- Muscle/body aches
- Nausea/Vomiting/Diarrhea
- Sore throat

As in previous years, students with a fever of >100.0 , will be sent home.

- If a fever of >100.0 was their only symptom, they can return when they are fever free for 72 hrs, without fever reducing medications.
- If they had a fever of >100.0 and any symptom listed above, they must follow the steps listed below.

If your child is sent home from school for a suspected case or symptoms of COVID we ask that you do not return to school until your child meets the criteria below.

- If your child is sick and does not get tested for COVID-19, your child must stay at home for 10 days or as directed by the health department. Please call your doctor for further evaluation. *Please note that COVID testing or negative test results are not required to return to school. However, if your child is ill and not tested, he/she must stay home for at least 10 days unless a doctor's note stating an alternate diagnosis or note showing a negative test result is provided.
- If your child was tested and found to be positive for COVID, your child may return to school as directed by the Butler County Health Department, (which is usually 10 days after the date of their positive test). A negative test result is not required to return to school after isolating for 10 days. Students must also be fever free for 72 hours, without fever reducing medication, and have an improvement of their symptoms before returning to school.
- If your child has a COVID-19 test that is negative, he/she may return to school after getting the negative results and when he/she has been fever free for 72 hours (without fever reducing medicine) and when symptoms have improved for 72 hours. A note showing negative test results is required before returning to school.
- If your child visits a healthcare provider and gets a diagnosis other than COVID-19 he/she can return once they have met the criteria to return, based on the diagnosis. Again, they must be fever free, without fever reducing medication for 72 hours. **Please show this letter to your medical provider since Talawanda requires a doctor's note stating the alternate diagnosis before your child can return to school.**

****Additionally, any siblings must begin to quarantine when they arrive home from school today. They may return to school if your doctor provides an alternative diagnosis or you receive a negative COVID-19 test result.****

Please reach out to your school nurse if you have any questions. Thank you!

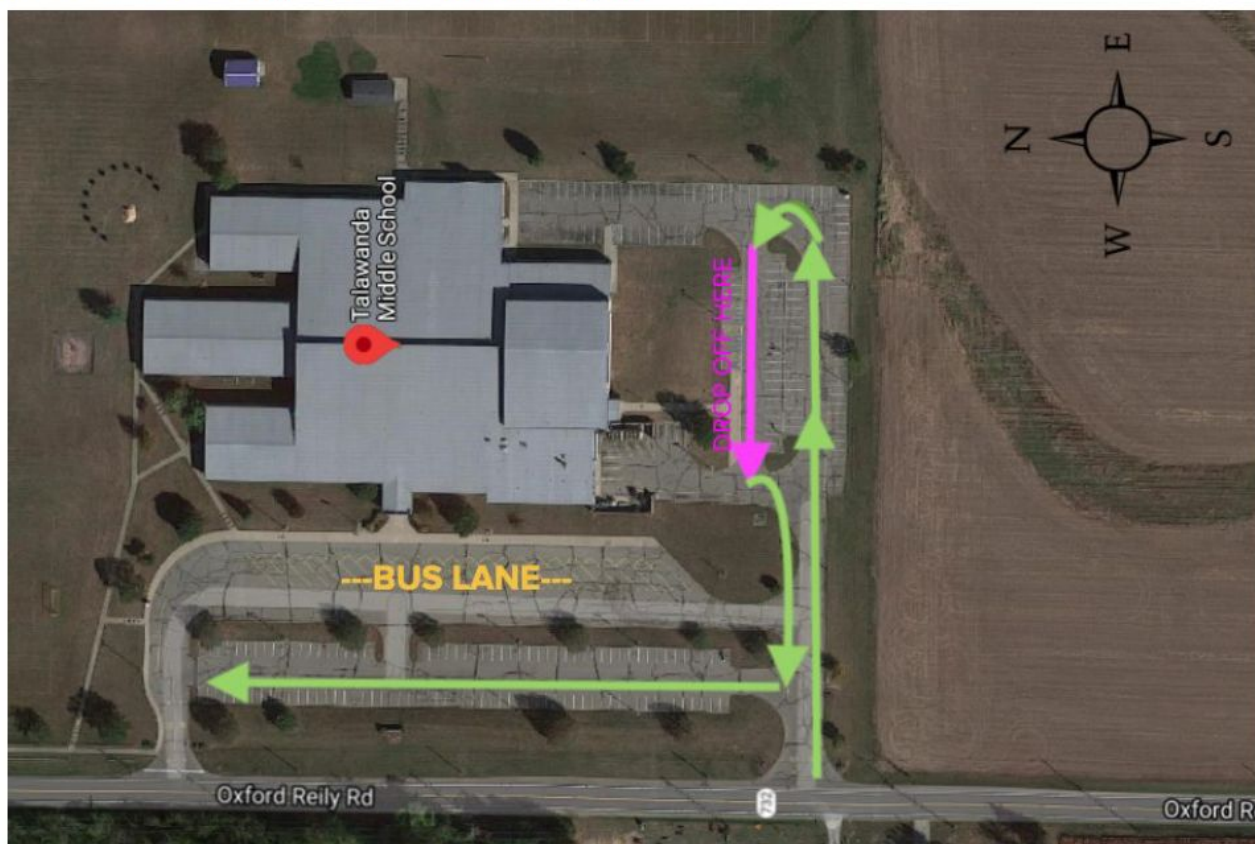
TMS MORNING DROP OFF PROCEDURES

Our doors open between 7:40-7:45am.

When you enter the parking lot, you should keep your car moving in the continuous line (see image attached). Cars are not allowed to park, the line needs to be fluid. There is plenty of space outdoors for students to space out while waiting the few minutes for the doors to open. Please have your student exit your vehicle as soon as you are pulled up alongside the building (see the pink section). This allows 5-8 cars at a time to drop off and everything moves quicker.

Be careful to note that busses will be entering the parking lot and will need to have the right of way as they attempt to enter the bus lanes close to the building.

Thank you for your assistance with this process. It will help everything move smoothly in the mornings!!





Lifetouch.

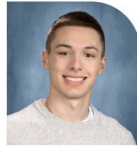


PICTURE DAY IS COMING



Order your school pictures today on mylifetouch.com

10/30 In House Students + 11/4 Virtual Students
Talawanda MS



- 1 Visit mylifetouch.com
- 2 Enter your Picture Day ID
EVTM8ZSC7
- 3 Order your perfect package—and don't worry about returning anything on Picture Day!

Lifetouch
REWARDS™

Earn exclusive offers for your online picture purchases.

PICTURE DAY IS:

EL DÍA DE LA FOTO ES:

10/30 In House Students + 11/4 Virtual Students

Talawanda MS

Order now on
mylifetouch.com
using your Picture Day ID: **EVTM8ZSC7**
and receive exclusive online offers.

Encarga ahora en mylifetouch.com usando tu ID del Día de la Foto y recibe ofertas en línea exclusivas.

1 Choose a Package *Elige un paquete*

Lifetouch + Shutterfly

As part of the Shutterfly family of brands, your Lifetouch digital images are now delivered through Shutterfly.

HOW IT WORKS:

- Select a package that includes Shutterfly Digital Images
- You'll receive a notification from Shutterfly when your digital images are ready
- View, download, make, share, preserve, enjoy!

Prints Delivered to Home or School

Digital Images Delivered via Shutterfly

A. Deluxe \$35.00 Includes Shutterfly Digital Image(s) 1 - 8x10 2 - 5x7 4 - 3x5 8 - 2x3	B. Deluxe Plus \$42.00 Includes Shutterfly Digital Image(s) 1 - 8x10 2 - 5x7 4 - 3x5 8 - 2x3 Bundle + Save (1 Variety 2x3 added to your Deluxe Plus package)	C. Premium \$54.00 Includes Shutterfly Digital Image(s) 2 - 8x10 12 - 2x3 4 - 5x7 4 - 3x5 1 - 8x10 Calendar	E. Value \$30.00 2 - 5x7 4 - 3x5 8 - 2x3
G. Ultimate \$63.00 Includes Shutterfly Digital Image(s) BEST VALUE! 3 - 8x10 4 - 5x7 4 - 3x5 16 - 2x3 Bundle + Save (1 Variety 2x3 added to your Ultimate package)	D. Premium Plus \$61.00 Includes Shutterfly Digital Image(s) 2 - 8x10 4 - 5x7 4 - 3x5 12 - 2x3 Bundle + Save (1 Variety 2x3 added to your Premium Plus package)	F. Value Plus \$37.00 2 - 5x7 4 - 3x5 8 - 2x3 Bundle + Save (1 Variety 2x3 added to your Value Plus package)	I. Basic \$23.00 4 - 3x5 8 - 2x3
H. Family \$43.00 Includes Shutterfly Digital Image(s) 1 - 8x10 3 - 5x7 4 - 3x5 12 - 2x3	J. Entry \$15.00 2 - 3x5 4 - 2x3		

Or customize your package and see more choices at mylifetouch.com No te pierdas la oportunidad de encargar con antelación tu foto de la clase.

2 Choose your Image *Elige tu imagen*

More Backgrounds Available Online! *Más fondos disponibles en línea!*



NOTE: Background for your yearbook is selected by your school. *Nota: El fondo para tu añobook lo selecciona tu escuela.*

3 Add-Ons *Complementos*

Enhancement Special **\$12.74**
Especial de realce

Name & Grade
On All Pictures
Nombre y grado en todas las imágenes
-AND-
Basic Retouching
(Removes blemishes)
(Retoque básico
(Quita imperfecciones))

4 Enhancements *Realces*

Add to All Pictures **\$9.99**
Añade a todas las imágenes

-OR-
Add to Wallets Only (2x3) **\$6.99**
Añade a las fotos para la billetera (2x3)



Order before Picture Day on mylifetouch.com
using your Picture Day ID: **EVTM8ZSC7**

Encarga antes del Día de la Foto en mylifetouch.com con tu ID del Día de la Foto.

ONLINE ORDERS: No need to return this form on Picture Day.
ENCARGOS EN LÍNEA: No es necesario enviar este formulario al Día de la Foto.

PAPER ORDERS: Fill out form completely & return this form on Picture Day.
ENCARGOS EN FÍSICO: Llena el formulario por completo y envíalo al Día de la Foto.

If you do not order online, please fill this form out completely, enclose EXACT payment, and return to school on Picture Day. Enclose cash, money order or check payable to Lifetouch. Photographer won't make change. Si no encargas en línea, llena este formulario por completo, incluye el pago EXACTO y envíalo a la escuela el Día de la Foto. Incluye dinero en efectivo, giro postal o cheque a la orden de Lifetouch. El fotógrafo no entregará cambio.

Student First & Last Name _____ <i>Nombre y apellido del estudiante</i>		Teacher Last Name _____ <i>Apellido del maestro(a)</i>		Student Grade _____ <i>Grado del estudiante</i>	
Mobile Phone Number _____ <i>Número de teléfono móvil</i>		Email Address _____ <i>Dirección de email</i>			
Packages <i>Paquetes</i>	Qty <i>Cantidad</i>	Price <i>Precio</i>	Total <i>Total</i>	Image Code <i>Código de imagen</i>	
A. Deluxe		\$35.00			
B. Deluxe Plus		\$42.00			
C. Premium		\$54.00			
D. Premium Plus		\$61.00			
E. Value		\$30.00			
F. Value Plus		\$37.00			
G. Ultimate		\$63.00			
H. Family		\$43.00			
I. Basic		\$23.00			
J. Entry		\$15.00			
Add-Ons <i>Complementos</i>					
K. Enhancement Special		\$12.74			N/A
L. (8) 2x3 Wallets		\$12.99			
M. (2) 5x7		\$12.99			
N. (1) 8x10		\$12.99			
O. (4) 3x5		\$12.99			
P. (4) Variety 3x5		\$12.99			N/A
Q. (8) Variety 2x3		\$12.99			N/A
Enhancements <i>Realces</i>					
Premium Retouching <i>Basic plus whitens teeth and evens skin tone</i>		\$11.99			
Basic Retouching <i>Removes blemishes</i>		\$6.99			
Name & Grade on All Pictures*		\$9.99			
Name & Grade on Wallets (2x3)*		\$6.99			
SUBTOTAL					
*Name & Grade <i>Please print (Do not write exactly how it should appear on pictures)</i>		Add sales tax 6.5%			
TOTAL					

When you pay by check, you authorize us to process the payment as a check transaction, so to use information from your check to make a one-time electronic fund transfer from your checking account. A service fee may be charged on returned checks. Photocopies of checks are not accepted. By completing and submitting this order form, you are agreeing to all of Lifetouch's terms and conditions located at www.lifetouch.com/terms-conditions and to our privacy policy located at www.lifetouch.com/privacy. Cuando pague con cheque, nos autoriza a procesar el pago como una transacción mediante cheque a usar la información de su cheque para realizar una transferencia electrónica de fondos desde la cuenta de cheques por única vez. Por cheques rechazados se podrá aplicar un cargo. No se aceptan cheques de pago falsificados. Al completar y enviar este formulario de pedido, acepta todas las condiciones de Lifetouch ubicadas en www.lifetouch.com/terms-conditions y nuestra política de privacidad ubicada en www.lifetouch.com/privacy.



TMS & THS Wednesday Food Distribution

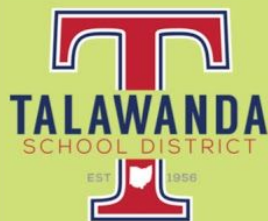
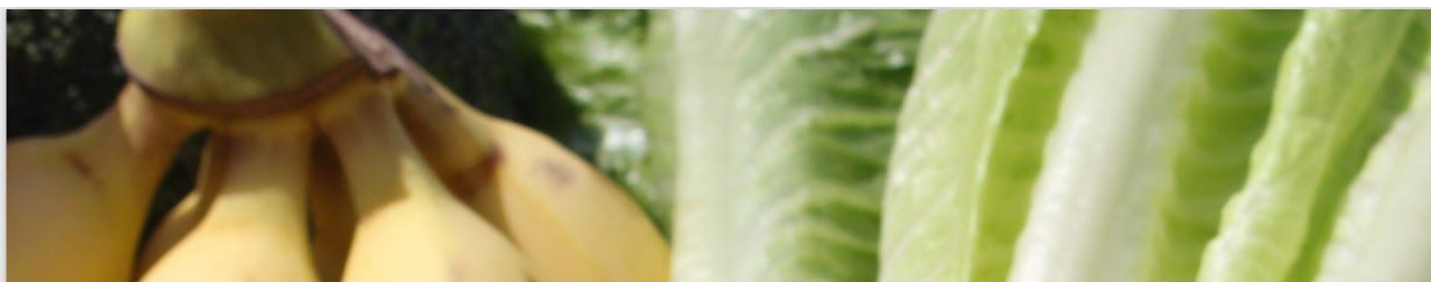


Any students who is attending school in person may pick up 1 breakfast and 1 lunch on Wednesdays between 9:00-10:00 a.m. for FREE!

Pick up at TMS or THS Main Entrances. You may pick up at either TMS or THS for ALL children.

**Beginning on Wednesday, October 21st
Contact TMS or THS Main Office with questions.**





Talawanda School District Remote Learning Food Program

Families can pick up 5 breakfasts & 5 lunches from
any of the three elementary schools on

Mondays from 2:15-2:45 p.m.

Pick up will be at the front door of each building.

Bogan Elementary 5200 Hamilton Richmond Road

Kramer Elementary 400 W. Sycamore Street

Marshall Elementary 3260 Oxford Millville Road

**All meals
are FREE!
No cost to
any family!**

**Unable to make the pick up
time? Contact your child's
school.
For more information, call
513.461.0455.**

**Open to any
child ages 1-18.
ALL families are
welcome to
participate!**





PublicSchoolWORKS

A Safety & Regulatory Compliance System



Stay Safe Speak UP!

(Remain Anonymous)

Call or go online today to report harassment, threats, suspicious behavior or other concerns which may jeopardize the safety of students, employees or school facilities.

Your message is very important in helping us maintain a safe school environment.



It's easy!

Phone

1.866.listen2me (toll free)

Online

1. Go to www.talawanda.net
2. Click on Health & Safety
3. Click on Safe School Help Online

Report these safety concerns:

- Weapons
- Drugs / Alcohol Abuse
- Suspicious Behavior
- Suicide / Self Abuse
- Problem Relationships
- Sexual Assault
- Fights / Violence / Abuse
- Harassment / Threats
- Theft / Vandalism
- Health Concerns / HIV / AIDS



24/7/365

Available all day, every day,
from anywhere.

online or
1.866.listen2me